

Invitation online event

UNESCO and CoE Global & Inclusive Learning (THUAS)



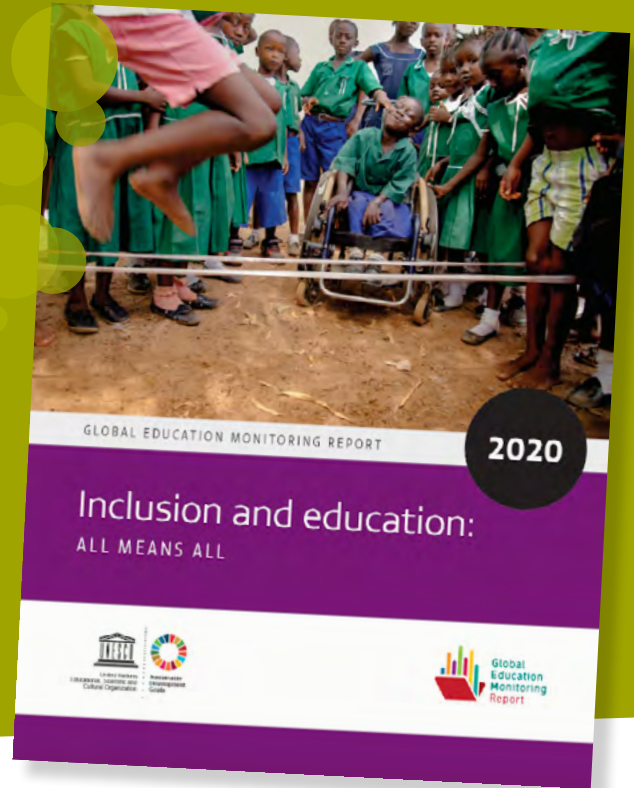
Unesco
Nederlandse Commissie

THE HAGUE
UNIVERSITY OF
APPLIED SCIENCES

Inclusive Education in times of COVID-19

National launch of UNESCO's
Global Education Monitoring
Report 2020

October 15th, 09.45 – 11.30 hrs.
Click [this link](#) for registration



In the Global Education Monitoring Report, UNESCO, as the responsible UN organization, provides an annual report on the state of affairs in education in the context of goal 4 of the Sustainable Development Goals: to ensure inclusive and equitable *quality education and promote lifelong learning opportunities for all*.

This year's report has education and inclusion as its overarching theme. Extreme relevant given the school closures and the switch to largely on-line education due to the global COVID-19 crisis.

The Netherlands National Commission for UNESCO and the Centre of Expertise Global and Inclusive Learning of The Hague University of Applied Sciences (THUAS) are organizing the Dutch launch of this report, linking the global perspective to the Dutch context. *How have teachers, administrators and students experienced education in recent months and what issues surrounding inclusion have arisen?*

Speakers include Kathleen Ferrier (chair of the Netherlands National Commission for UNESCO), Rajash Rawal (member of the Executive Board, THUAS), representative UNESCO Paris (Global Education Monitoring Report), Jos Beelen (lecturer Global Learning, THUAS), Mary Tupan (executive director ECHO, Expertise Center for Diversity Policy), Rick Wolff (researcher, RISBO) and Said Touhaimi (member of the UNESCO Youth Commission, student of THUAS) and Wâtte Zijlstra (program director and moderator CoE Global & Inclusive Learning, THUAS).

Program

09.45	Pre-program
10.00	Opening by Kathleen Ferrier, Rajash Rawal and Wâtte Zijlstra
10.10	Video students The Hague University of Applied Sciences, <i>experiences inclusive education</i>
10.15	Presentation of GEM report by Anna D'Addio, senior policy analyst UNESCO
10.30	References. <i>How have teachers, administrators and students experienced education in recent months and what issues surrounding inclusion have arisen?</i> - Mary Tupan (executive director ECHO), Jos Beelen (professor Global Learning), Rajash Rawal (member of the Executive Board, THUAS), Rick Wolff (researcher, RISBO), Said Touhaimi and Rishainy Bomberg (members UNESCO Youth Commission, students THUAS) -
11.10	Q&A
11.30	Closing event

let's change
YOU. US. THE WORLD.